



HEAT EXCHANGER



Features & Advantages

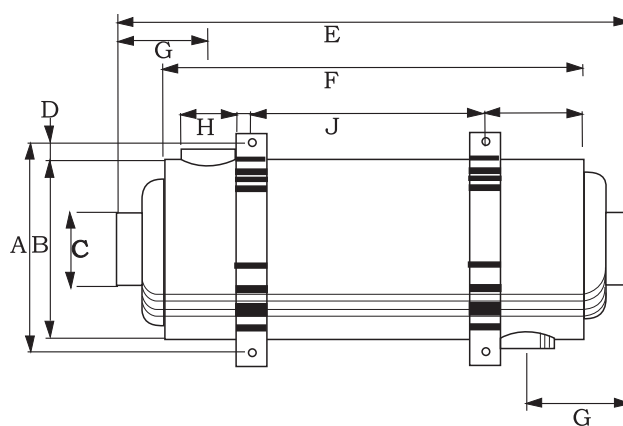
- Maximum working temperature of 110oC (104oC)
- Maximum working pressure 1000kPa
- High quality corrosion resistant stainless steel AISI - 316
- Rolled formed to shape and precision welded
- Designed to minimize pressure loss in the heating system
- Suitable for all types of swimming pools, spas, and hot tubs

Warranty

Heat Exchanger | 1 year

Technical Specification

Model	Code	Capacity		Hot Water	Pool Water Flow	Pool surface
		KW	Btu/h	l/min	l/min	m ³
MDW - 80	95000	25	95	30	25	30
MDW - 135	95001	40	135	25	200	30-60
MDW - 200	95002	60	200	30	250	60-75
MDW - 260	95003	75	260	35	300	75-115
MDW - 400	95004	120	400	50	360	115>



All bracket holes 1/4" I.D.

Product Dimensions

Model	Code	A	B	C	D	E	F	G	H	J
		mm								
MDW - 80	1000	5 ^{1/2} "	5 ^{1/8} "	1"	1/4"	11"	9"	2 ^{1/4} "	1 ^{1/4} "	5"
MDW - 135	1100	5 ^{1/2} "	5 ^{1/8} "	1"	1/4"	13 ^{1/2} "	11"	3"	1 ^{1/2} "	4"
MDW - 200	1200	5 ^{1/2} "	5 ^{1/8} "	1"	1/4"	18 ^{3/4} "	16"	3"	1 ^{1/2} "	9"
MDW - 260	1340	5 ^{1/2} "	5 ^{1/8} "	1"	1/4"	23 ^{3/4} "	21 ^{1/4} "	3"	1 ^{1/2} "	14"
MDW - 400	1450	5 ^{1/2} "	5 ^{1/8} "	1"	1/4"	41 ^{3/4} "	39 ^{3/8} "	3 ^{1/2} "	2"	31 ^{1/2} "



Printed in Australia
By BPA

Distributed internationally by Minder Water Industries Sdn. Bhd. All rights reserved 2018.
Distributed in Australia by Minder Water Industries Pty. Ltd.
Distributed in China by Minder Water Industries (Canton) Co. Ltd.
Distributed in South-East Asia by Minder Water Industries Sdn. Bhd.